

Stewart Island News

May 2003 \$2

Celebrating Stewart Island

This month's issue will be slightly different in several ways. Firstly there has been a change of editor - Stewart Dovey will be taking over this role. This will allow Chris Visser to concentrate on researching and writing more articles for the paper - a task she is looking forward to immensely.

On behalf of all readers, I would like to send a big thank-you to Chris for her sterling efforts in resurrecting SIN and for all her hard work in keeping the pages rolling out every month. Look out for her new reporter's hat.

Another change will be a subscription drive. To make the paper viable without another price increase (the very last thing intended), it is hoped to significantly increase the number of copies sold. Therefore, if you know of anyone who would be prepared to pay for SIN to be posted to them on a regular basis, please contact either Stewart, Chris or Margaret Hopkins and pass on the details.

We need to sell more copies of SIN every month to make it viable. Please help our subscription drive this month.

Friends, ex-pat Islanders, relatives on the other side, in fact anyone who has an interest in the island would be worth signing up. Details back page.

Articles, stories and reports from the whole community, clubs and other organisations are still actively sought. As always, this is your newspaper and without your contributions it becomes just another 5-minute silence. New contact details are on the back page.

I hope I can keep up the good work. Regards - Stewart.

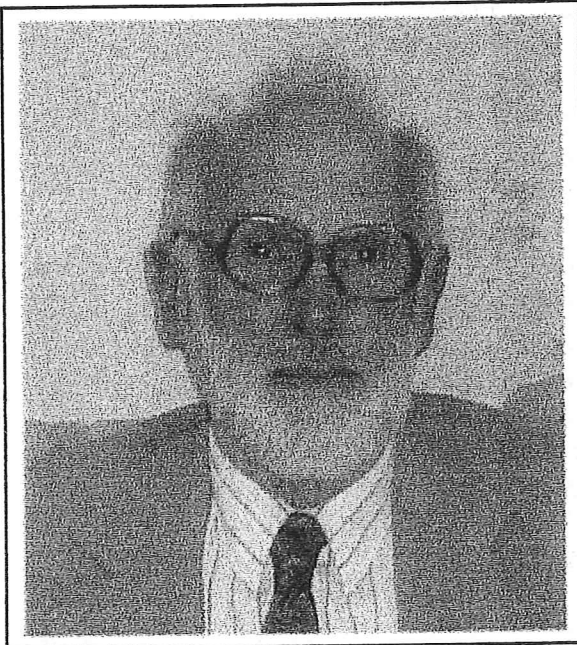
COMMUNITY CENTRE

BRIAN GEE - INTERNATIONAL HYPNOTIST
12 JULY AT 8PM TICKETS \$15.00

WATCH THE NOTICEBOARD FOR DETAILS OF TICKET SALES,
DON'T MISS BRIAN THIS TIME - HIS LAST SHOW WAS A REAL
HIT AND ABSOLUTELY HILARIOUS.

YOU'LL BE DISAPPOINTED IF YOU MISS IT!

Advertisement



Lindsay Lord. A new career in the making?

Senior photographer makes TV3 news

When the Governor General opened the very successful senior's photographic exhibition in the Community Centre last year, Dame Silvia Cartwright invited Toi Rakiura to display the photographs in the foyer of the Beehive in Wellington.

Toi Rakiura trustees Gwen Neave, Lesley Gray and Ulva Amos were chaperoned by senior photographer Lindsay Lord on their big OE. TV3 were so impressed with the high standard of the art works they screened a very complimentary news item about Stewart Island and the background to the displays.

This has provided excellent free publicity for the island and comes as recognition for the many hours of hard work put in by Gwen and her team. The group was met in Wellington by fellow trustee Bruce Ford who was seen busily networking with politicians and their staff.

See report from Gwen Neave on page 14.

STEWART ISLAND ROADING STRATEGIES – PUBLIC MEETING

40 people attended a public meeting on Thursday 15 May in the Community Centre to identify the major issues for Stewart Island Roads. The District Council and Montgomery Watson Harza Consultants are preparing a 15 year Roading Strategy for the Island and are seeking input from the public roading issues for Stewart Island

Stewart Island currently receives 22,000 visitors a year – and this is predicated to increase to 65,000 visitors by 2018. Around 100 vehicles a year are being bought to the Island, and the permanent population is also likely to increase in coming years. With this in mind – the meeting worked through various topics:

Pedestrian access.

There was general agreement that pedestrian walkways was a need in certain parts of the Island. The key area is the area from the wharf to the Hotel, Main Road and up the hill to Ferndale. Visitors coming off the ferry are unsure where to walk. When asked for a show of hands how many people had had a 'near miss' with a pedestrian or as a pedestrian almost everyone in the room put up their hand. The fact that many visitors also had no idea what side of the road to walk on anyway – or were walking on the road regardless of any footpath – suggested that there needs to be education of visitors about how to share roads. Baz said that if you drive on footpaths you won't hit pedestrians as they are walking on the road – so we must all keep our wits about us when seeing a Stewart Island Flights van approaching.....

Other roads where there are problems are the road to Ackers Point and to Golden Bay. A suggestion was made the perhaps the road should be made one way around Leonard – Excelsior – View – Dundee Streets, and also from the Golden Bay end of Rankin Street to the Golden Bay Wharf turnoff. By making

some roads one way we won't need to widen them and one edge would be available for parking. Localised flooding of existing footpaths on main road, and between the school and the Community Centre is a problem.

Road Width

Existing road widths were considered adequate by the meeting – there is a need for passing bays in a few places but to widen roads would spoil the character of the place and speed up traffic too much. The meeting was unanimous that we do not want to see double lane roads and footpaths on both sides of the road all over Stewart Island.

Visibility

The reported accident history of collision accidents on Stewart Island because of poor visibility is very low. There is a risk that by improving road visibility we would simply increase the speed of traffic. There are a few areas where visibility could be improved – but perhaps installing mirrors would be better than cutting off corners.

Lighting

There were mixed views about street lighting – some people thought there needed to be more so that visitors can find their way around – some thought there was enough. The existing street lights in Halfmoon Bay are poorly positioned for pedestrians and also create glare for drivers. Te Anau has good Bollard lighting around their water-front, which lights up the footpath and not the road. Something similar would be good here.

Slips and Erosion

The situation at Ringaringa has highlighted to the community what happens if remedial and repair work is not carried out. Areas at risk of falling into the sea must be identified and work carried out to protect those areas before the problem becomes too expensive to fix. General discussion took place about "random dumping" – with people expressing different views over the desirability and usefulness of dumping fill from slips on the side of the road. The view was expressed that in the long term this work is good as it creates pedestrian walkways, yet in

the short term the work can be ugly and dangerous. There was agreement that dumping of material on the side of roads should be planned – and not simply an opportunistic ‘lets dump it here’ approach.

Vegetation / Visibility

People agreed that vegetation was part of the special character of the Island, and that roadside vegetation trimming should be carried out thoughtfully. Water tables must be better managed to ensure they are working.

Parking

A view was expressed that providing more parking spaces is not the only solution to any parking problems. Short term parking and elderly/ disabled parking spaces in the Bay are one way to ensure that people can have access to parking when they need it. A view was expressed that as soon as you provide a car park – you’ll soon need a bigger one.

It was considered that people should park their vehicles on their own property – especially in places where parking on the road creates a problem for other users.

The meeting was asked what they would want to see fixed first if we could fix anything. Pedestrian access was seen as the major existing problem. In the long term issues at the wharf with vehicle access, parking and pedestrian access were only going to get worse. Ian Munro expressed his view that reclamation work of some sort should be carried out alongside the access road to the wharf to provide a solution to all the parking and pedestrian problems around the wharf /shop/ hotel area.

If you have other points you wish to pass on to the consultants regarding the roading strategy – you can contact Irwin Harvey:
MWH New Zealand Limited
PO Box 471
INVERCARGILL
fax 211 0260 phone 211 0251
email: irwin.w.harvey@mwhglobal.com

Halfmoon Bay Beat

Hi Everyone,

It is good to see the place has quietened down since the Easter ANZAC weekends.

Over that period your local cop was kept busy with thefts, injured trampers, missing property and a host of other calls.

There were two arrests (visitors) over that period so it shows that when the Island gets busy the offending rate goes up.

It maybe prudent that before the next busy season that we take a good look at keeping property and ourselves safe.

I will be venturing into a Crime Prevention programme over the next few months leading up to Labour Weekend. I hope to speak with local business in relation to crime prevention and will be distributing crime prevention information.

It appears that when there are large numbers of people here then there is a rise in dishonesty offences such as theft. All though most of these thefts appear to be from visitors and thought to be perpetrated by visitors it will be only time before I am receiving complaints from locals.

Winter is also upon us and there is that extra need to be safe on the roads. Roads will be wet and slippery over the next few months. The daylight hours are reduced so we must be careful out there.

I have had word from management that a traffic constable will visit the Island as part of their strategy to cover all areas – again I can only warn you to have your vehicles up to legal standard and wear your seatbelts. In saying that I am pleased to see a larger number of people wearing seatbelts locally, keep it up.

Regards,

Rob

BOOK REVIEW “The adventures of Pioneer Women in New Zealand” edited by Sarah Ell (In the SI Library)

Review by “Anon”

This is an easy-to-read collection of different stories from women of New Zealand in the 19th century – mostly, but not all, pakeha. A bit like dipping into a magazine, Sarah Ell has collected excerpts from books, letters and diaries, so that the book can be started at any article, and doesn't have to be read front to back, cover to cover.

There're some interesting characters in here too – as you would expect, we have the brave pioneer, triumphing over adversity – Charlotte Godley, living in an A-frame house (just like the one used in the Sunday night TV programme “Colonial House”- there's even a photograph) who had it burn down around her in five minutes – but also the less-conformist: read all about Bidy who lived in Buller with her two husbands – two at the same time, not one after the other! And not everybody enjoyed New Zealand: “Hopeful”, who for

very good reasons, published her book anonymously in 1887, decided that “the characters not suited for Colonial life are those endowed with sympathetic, imaginative, poetic and refined tastes, also those with affectionate and appreciative natures”. Some traumatic experiences from the Land Wars are included as well as those people who are just blasé about what happens to others: except when it affects their own sleep “... we were wakened out of our first sleep by a commotion which was on account of the young infant [2 days old] being found dead besides its mother, it supposed she had overlaid it. She is a young girl, not 19, without much sense, she appeared to be in a sad state about it, poor thing, its best away, it put us off our sleep for an hour or two.”

The book has been divided into different themes: natural disasters, explorations, pioneering life, conflict with the Maori, first encounters, different paths and the longest journey. It's a little slow, read from cover to cover, but treated like a magazine, just dipping into this story or that, “The Adventures of Pioneer Women in New Zealand” is an interesting read.

STEWART ISLAND GARDEN CIRCLE

by Jenny Gell

May's meeting was held at the home of Raylene Waddell on the 8th with a good turn out of members. It was good to have Jeanette Mackay return after the summer season in The Fernery.

Discussion on positive thoughts of the winter garden was very rewarding.

Competition results:

Heath/Heather:	1. Peggy Wilson	2. Nancy Schofield	3. Lil Skipper
Chrysanthemum:	1. Lil Skipper	2. Anita Geeson	3. Myra Leask.
Flowering Bulb:	1. Peggy Wilson/Raylene Waddell	2. Myra Leask	3. Lil Skipper

In-house prize went to Anita Geeson and Peggy Wilson

Next meeting is to be held at the home of Myra Leask on 12th June at 1.30.

MUSIC REVIEW

PAROCHIAL: Looking At The Big Picture.
Rakiura Records.
Reviewed by Chris Chilton.

This album's title is fitting. Island boy Nathan Pasco sees music in giant, wall-to-wall widescreen. He always has looked at the big picture. Probably always will. Even as a Southland Polytechnic music student in 1991 his songs were epically constructed anthems with a message and everything-but-the-kitchen-sink production.

Twelve years later, Pasco's big musical vision has finally made it on to CD, albeit in glorious, hissy, lo-fi format. This ambitious labour of love is chocker full of fist-pumping, heart-on-the-sleeve anthems that tell stories of defiance, struggle, individualism, heroism and courage. They're rebel songs with a meaty moral.

Pasco pretty much wrote, sang and played everything on the album, with a little help from Lania Davis and Aasmund Nesse, and he's done a remarkable job of it, considering the technical limitations he had to overcome.

On the CD cover he offers his "full apologies for the sound quality of this project" which was "governed by budget." True enough, Looking At The Big Picture isn't going to win a Grammy for best production. There's hiss, some unintentional distortion and a few clunky instrument drop-ins -the curse of any DIY recording session. But this music was never intended for the slick sameness of the commercial airwaves. It's Nathan Pasco's personal statement, and an appealing one at that.

Raw emotional honesty is a rare commodity in any walk of life. But you'll find it here, in spades, in Parochial's Stewart Island grooves.

PLANNING FOR SEWERAGE SCHEME EXTENSION IS CONTINUING - (SDC).

Construction of the extended sewerage scheme for Stewart Island could start after Christmas.

But final approval is some months away, the Council's Asset Manager of Water and Wastewater, Peter Greenwood, says.

Just over 200 properties are in line for connection to the extension, with the likelihood that more would be included as land is developed.

The Community Board agreed to extend the scheme, subject to seeing more detailed plans and costs, and these will be drawn up by the Council's consultants.

But in the meantime, the Council has applied to the Government's new fund for a subsidy towards the cost of the sewerage scheme extension.

Mr Greenwood says that there is a three-stage application process, and the Council expects to hear by the beginning of next month whether it has got through the first stage.

Please remember, if you know of someone who would like some SINS in the mail, we can arrange for a regular copy to be sent to them,
Just fill out a subscription form, send it in with a cheque and we will do the rest.
Thanks

LETTERS TO THE EDITOR.

Sir,

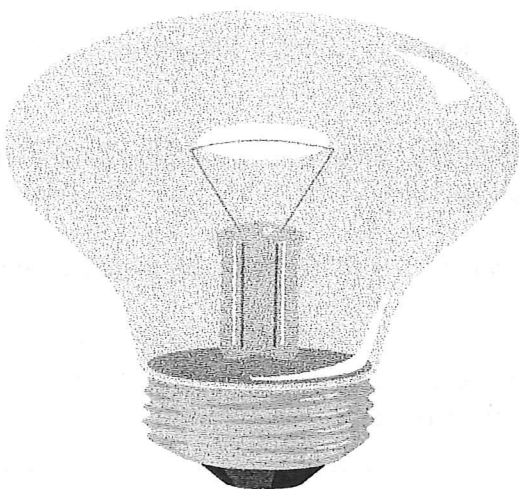
I would like to comment on an article that appeared in your paper in February. It was written by Dil Belworthy, under the headline "Believe what you read?" and in it he criticised The Southland Times over the wording of an editorial about the threatened release of stoats on to the island.

I found it ironic in the extreme that this headline should have been used over Dil's opinion piece when Dil himself had made so many errors of fact. For the record, my name is Chris Chilton, not Chisolm, I did not write the editorial he was complaining about and he used quotation marks around comments that most certainly did not come out of my mouth.

Apart from all that, some parts of his article were an accurate representation of our phone conversation.

As Dil himself alluded to, Islanders would be well advised to take it all with a grain of salt.

Chris Chilton
Deputy Editor
The Southland Times



Mainland worries?

Golden Bay

Sir,

It seems incredible that so soon after Stewart Island has become a National Park certain "presumably responsible" organisations have seen fit to desecrate the Golden Bay area for a little extra vehicle parking space. This without the courtesy of consulting the local residents who are themselves restricted by the same "Authorities" from removing soil or vegetation from their own properties.

It would appear that the additional parking required is mainly for commercial purposes. From my experience of having lived for approx. 45 years of my life on Stewart Island, I would suggest, after viewing the photos of the Golden Bay excavation, that a heavy rainfall will likely bring down the remaining vegetation and more soil now sitting precariously above the excavation.

This will further desecrate the Bay. Many visitors are coming to view the new, widely publicised natural beauty of Rakiura National Park. Included in these are overseas tourists from increasing numbers of Cruise Ships. Perhaps, now, it would be better for Stewart Island's image that these cruise ship visitors be kept well away from Golden Bay in its present state, and be landed only in places of natural beauty such as Ulva Island.

Unfortunately the damage to Golden Bay may have already been done. However, I suggest that an alternative might have been to prohibit all-day parking at Golden Bay and make it a "drop-off and pick up" area only with extra parking being made available at the western end of Traill Park.

R.J. Hicks
Rangiora

MUSEUM NOTES

General: With the onset of winter, attendances are tending to drop off, but we still see some interested (and interesting) folk about.

Building: No progress on this front, but there will be two representatives from the Southland District Council at our next meeting, and options will be discussed for future action. We hope a decision will then be made on where we go from here.

Acquisitions: A recent donation is a sealskin stole with an interesting history. It was given by Mae Forrester, nee Bragg, and is made from skins caught by her father George Henry (“Nay”) Bragg and his brothers Tom, John, and Bob who, with their father, went sealing at the Snares Islands during an open season before World War 1.

Tom Bragg sent some skins to England to be cured, and had a full length overcoat made for his wife Margaret, and after she died their daughter Neta Rawle had the coat remodelled into the stole by Mutual Furs Ltd of Dunedin (whose label is still attached).

When Neta died, the stole was passed on to her cousin Mae. The stole is in “mint” condition, and we are very pleased to have it in our collection.

Boatnapped By Borstal Boys.

It's true! The **HELGA**, a well known local vessel, was lying at the Bluff wharf – fully fueled and provisioned – when she was “converted” by two escapees from the Invercargill Borstal.

The two lads, aged 15 ½ and 17 years escaped from captivity and first burgled the Southland Museum, taking a Mauser rifle and two old revolvers. They left the rifle behind outside the Museum, and then “borrowed” a car which took them to Bluff where they hid for a time before attempting to steal the vessel **MYSTERY**. She would not start, so they turned their attention to the **HELGA** which was moored close by, and having succeeded in starting her they headed out into Foveaux Strait and made for Stewart Island. They passed the incoming vessel **ANNIE**, whose crew were mystified by the strange behaviour of the **HELGA**, but both vessels carried on their respective courses.

One of the boys had some experience of the Island waters, and they got as far as Mason's Bay. Here they attracted the attention of two boats anchored in the Bay. The crew of the **CORDELIA** heard a Police message on their radio and gave chase, but abandoned the idea, returning to their anchorage. From there they watched the boys return and drop anchor in a very exposed place before using the dinghy to get ashore on one of the Ernest Islands. In the meantime the Invercargill Police had engaged the oyster boat **MONICA** and fishing vessel **QUEST** to help in the search, along with the Southland Aero Club and their Tiger Moth planes.

Messrs Williamson and Hansen – skipper and crew of the **CORDELIA** – managed to get aboard **HELGA** and get her to shelter, later taking her back to Bluff. I have not found any reference as to what happened to the culprits, but I presume they were apprehended and dealt with in due course.

HELGA was a wooden vessel, built by Miller & Tunnage at Port Chalmers in 1948. She measured 48' x 12'6" x 6'6", was powered by a heavy duty Gardner diesel engine, and was originally set up as a side trawler. She was built for Mr Christiansen of Bluff, and later owned by Dixon Bros and Otakou Fisheries. Among her many skippers were Jim Bragg, Tim Pollock, Bob (Potty) Bailey, & Darcy Forrester. Her sister ships were **POITREL** – lost when Miller & Tunnage was destroyed by fire; **REO MOANA** – lost in Foveaux Strait with all hands; and **ENTERPRISE** – still fishing from Riverton.

HELGA was last sold to Wm Brennan who fished out of Greymouth for many years, and he and his crew Christopher Lind were lost when the boat rolled while negotiating the Greymouth bar on the night of 10th April 1986, wreckage being found next morning on a beach north of the bar.

Coincidence Department.

I was recently visited by a gentleman from Levin with photos of the **CORDELIA** – which he now owns, and is working to restore. His name is Ross Williamson, and his father was the skipper of **CORDELIA** at the time of the above events! Small world? **CORDELIA** was built at Sunshine Bay – Invercargill Estuary – in 1889 but that's another story!

Well folks, that ends my third effort. I hope you find it interesting – see you next issue.

Merv King.

EX EDITOR'S BIT...

Chris Visser

You have probably noticed a change in Editor for this issue of Stewart Island News – Stewart Dovey. I was getting a bit busy to keep putting SIN together so Stewart kindly volunteered to take over. I am really pleased that my efforts to get SIN going again has paid off into something that other people are willing to carry on doing – and I wish Stewart all the best. I will still feature in the pages of SIN – it takes a lot to keep me quiet, and I can now put some time into writing articles and sniffing out news for you. If you have any particular stories you want to see – just get in touch with either Stewart or myself and together we will do our best to get a story for you.

In this issue are two contributions from the Southland District Council – one about the excavations at Golden Bay and the other about the extensions to the Stewart Island Sewerage Scheme. I have an issue with both these articles.

I am a member of the Stewart Island Community Board, and am becoming increasingly disappointed in the lack of consultation with the Board and the community on what are quite major works in our community.

If you have been following the Southland Times in the last week or so – you will be

aware of the outcry from some people in the community over the work that has been carried out at Golden Bay. I must say I don't know if the work itself is a good or a bad thing – but the fact is that I and other members of the Community Board had no understanding of the scale of this work until it was in progress. At our Community Board meetings we discussed issues of safety in regards to overhanging trees and agreed it appropriate that some trimming of trees take place that were overhanging the road. What we seemed to have approved in some way is a major excavation that has no engineering report or assessment of long-term impacts, and this is unacceptable. I will make sure that we as a Community Board work through this issue and identify what went wrong, and will make sure it doesn't happen again.

There has been a suggestion that this work at Golden Bay has been carried out in such a way so that the “greenies” can't do anything about it. This attitude that one point of view is not to be listened to is unacceptable – we are a small community and if we can't listen and take into account each others views then that is a tragedy. I have always believed that we have strength as a small community – and that our strength is built on respect for other people – and I will (naively perhaps) continue to assume that we all have an opinion that deserves to be listened to.

You will see that the council is announcing that the proposed sewerage scheme extensions

are likely to go ahead. There was support from the community for the extensions in respect of Leask Bay, Rankin Street / Golden Bay and Butterfields. However landowners at Horseshoe Bay / Horseshoe Bay Road were,

in the main, opposed to the scheme on the basis that the sections in this area are big enough for effective septic-tank systems and due to the cost (\$12,000 as opposed to \$5000 - \$8000 in other parts of town). As a Community Board member, I have asked SDC to identify in respect of this area what the particular problems are at the moment that require a sewerage scheme in this part of the island. Also what will be the environmental impact of increasing the amount of sewage into the existing scheme.

For many parts of the Island an extension to the sewerage scheme is a necessary and

worthwhile thing – however I for one am becoming increasingly suspicious of the ability of our Council to manage the scheme we have, let alone extensions to the scheme. I worked in a shop opposite the sewerage well in Halfmoon Bay over the summer – this well stinks a lot of the time and I can't see that pumping more sewage into this well before getting it working properly is in anyone's interests.

Those are my opinions – and (naively perhaps) I hope that you will think about them regardless whether you agree with me or not. If you have views about work that is happening at the moment, or proposed work by SDC, please get in touch with either myself or other members of the Community Board.

Chris Visser

Email: possum.stewartisland @xtra.co.nz, PO Box 123, phone 2191 494.

Golden Bay excavation (contributed by SDC).

The controversial excavation of an overhanging cliff at Golden Bay on Stewart Island was properly authorised by the Council following a request from the Chairman of the Community Board. CEO Michael Ross said he had met the staff and contractors involved, and also discussed the issue with Chairman Bruce Ford. He was satisfied that the contractors had not exceeded the authority they had been given by the Resource Planning Manager, Bruce Halligan.

“In fact, they did less than was originally requested.”

Mr Ford had requested the work in writing and the Board had previously discussed it, although no formal resolution was recorded.

“This has been on the “to do” list for the last 4-5 years. We took the opportunity to do it in the off-season while a suitable machine was on the island,” Mr Ross said. He acknowledged that some residents were upset because the excavation work was unsightly in a popular spot.

“We are fully aware of how sensitive that area is. But looking back, when the original excavation was done several years ago, the scar would have been of similar proportions and the vegetation grew back.”

It showed how difficult it could be to find a balance between maintaining a natural environmental or landscape feature and mitigating a hazard.

Mr Ross said the overhang was removed because there was a clear risk to both people and vehicles. None the less, the fact that some people were apparently unaware of the extent or impact of the excavation showed how important it was to make sure that people were fully informed in advance. Both Mr Ross and Mayor Frana Cardno stressed that the Community Boards had the authority to decide on local issues.

**COMMUNICATIONS FROM THE
COMMUNITY BOARD**

I am sure all those folks responsible for paying the power bills on Stewart Island will be pleased to know that the tariff for Stewart Island Electrical Supply Authority for 2003/2004 year has remained unchanged.

While we are talking about electrical matters, I wish to request from folks wishing to have electrical contract work done by S.I.E.S.A., to contact Colleen at the office between 9.00 and 12.00 noon on weekdays. Some times people are going directly to the Rodney or Johann – it would be better for all concerned if this didn't happen. If you have trouble contacting anybody after 12.00 you may send a fax. to the powerhouse - 2191-308 or the Council office 2191-022 - with your work requirements.

Just for your information, Ian Sinclair and Karen Adams are both employed by South Roads. This is a separate company and has not been a subsidiary of the Southland District Council for some years. Messages can be given to either of them through the Area Office - but not very often.

You will be pleased to know that a \$49,000 payment from the Government towards the

costs the S.D.C. has incurred due to the development of the Rakiura National Park has been received. Mike Ross stated that this should be treated as a down payment rather than final settlement. This is only 75% of what the amount the council asked for. After a considerable amount of lobbying, the Ministry of Economic Development had recognized that there were special circumstances and that such a small community could not shoulder the burden of providing the facilities needed to meet the increasing visitor numbers. We have been informed that this amount was a one-off payment.

The Government is making \$15million available each year to subsidize new sewerage schemes for rural communities. Four new sewerage schemes are planned for Southland communities. Stewart Island is one of these communities and we are seeking a subsidy to extend the scheme here.

It is proposed that Johnstone Road, which is the road leading off Horseshoe Bay Road heading around the coast to the track, is going to officially be renamed Horseshoe Point Road. This change is to be made to be in keeping with the name used locally.

Colleen Dawson
OBAN AREA OFFICER



This month's award goes to Gwen Neave with thanks for all her tireless voluntary work undertaken for so many community groups: - Toi Rakiura Arts Trust, Stewart Island Players, Victim Support, etc

The box of chocolates was donated by *Ann's Place, Backpackers.*

BASIN AWARD

THIS MONTH'S BASIN WAS TO BE UPGRADED TO A BUBBLING CAULDRON AWARD. HOWEVER, AS NO NOMINATIONS HAVE BEEN RECEIVED, IT REMAINS SAFELY ON MY SHELF. PLEASE INUNDATE ME NEXT MONTH WITH NEW IDEAS.

STEWART ISLAND LIONS CLUB

WHO ARE WE?

As part of Lions International we belong to a world-wide service organisation dedicated to serving the community in which we live. Our monthly Tea meetings are held on the first Wednesday of each month with our Directors (or organising committee) also meeting monthly.

WHAT DO WE DO?

Some of our more recent community projects have been:

1. Hunters huts were built, with out help, at Pegasus.
2. An accommodation hut was erected at Ulva Island for the use of research students and D.O.C staff. (We would like to thank members of the public who assisted with this project).
3. Annual door-to-door collection for the IHC and the HEART FOUNDATION. (Thank you to all members of the public who donated so generously)
4. Working Bee to assist with the repair of the shed and seats at the Motorau Moana Native Gardens.
5. Donate and deliver Christmas cakes to Senior Citizens.
6. Chop and deliver firewood to the Island's elderly.
7. Continue our on-going sponsorship of the National Guide Dog Training Scheme. (We have adopted a new puppy as our previous dog has been placed with an owner)
8. Made regular donations to:
 - Borland Lodge
 - Riverton Coastguard
 - South Island Cochlea Implant Programme
 - Starship Hospital Air Services
 - Camp Quality South
 - Stewart Island Library
 - Alzheimer's Society
 - Halfmoon Bay School over previous years

HOW DO WE ACHIEVE THIS?

Much of our fundraising consists of catering for barbecues over the summer months, also the hiring out of our barbecues to other groups. We are planning a Gumball Rally later this year. Money raised will be put towards the exterior painting of the Pavilion.

If you would like to join us, obtain more information or would like to attend one of our Tea meetings then please feel free to phone:

President, Noel Pasco - 2191 009
Secretary, Janine Murray - 2191 545
Ken Geeson - 2191 014, or any member of the Lions Club.

PEOPLE = POWER: WE NEED YOU!

EARTHWORKS AT GOLDEN BAY

by Margaret Hopkins

The recent major earthworks at Golden Bay have not only destroyed a scenic attraction and the gateway to Paterson Inlet but it has also created a hazard that will continue to dog the council in years to come.

Given the past history of unstable rock faces on Stewart Island any kind of major interference like this will exacerbate the potential for future slips and erosion causing ongoing problems.

Various excuses have been offered for why the work has been undertaken in the first place including public safety from an overhanging tree. The removal of tonnes of rock and vegetation which is crucial in the stability of this cliff face should surely have been the subject of some kind of serious engineering investigation, not the opportunist use of a digger and large truck that became available. The scale of the project was apparently not discussed at the Community Board meeting and it is questionable if all the members would have agreed to it if they knew exactly what was going to ensue. Surely a resource consent was required for works of this scale?

The fundamental question should have been asked 'just what do we want for the protection of Golden Bay as a tranquil, scenic spot enjoyed by thousands of people every year?' With increasing numbers of visitors and the extent of water taxis operating from this area, Golden Bay is a much busier place than it used to be. Since the advent of the marine farms in Paterson Inlet many people leave that bay to travel to work and consequently park their cars there all day. This has created a congestion problem that has been there for some time now.

Why has the Community Board not looked at this as a long-term issue? Should there be all day car parking in this area? Do we want it to be an industrial car park or a drop off point for people travelling into the Inlet? There are limited parking areas in the immediate vicinity of Golden Bay but there is a hardened car park area at Traill Park that could be used for all day parking. A lot of people living in town have to walk more than 5 minutes to work from their car park or bus stop so I don't see why we should have this fixation here with being able to drive to the 'door'.

Golden Bay would be much better suited to limited short-term car parks and off-loading parks for tour buses.

It seems farcical that we receive in the mail an invitation to have input into roading strategies that includes issues like parking, coastal erosion of roads, pedestrian facilities, vegetation enhancement and control when the Community Board is acting in an opportunist manner with little thought for the future. Will the Community Board and its advisors ever get it into their heads that Stewart Island is not like the rest of New Zealand and its roads and streets need to be treated in a manner far differently from urban towns and cities?

People that come to Stewart Island and most of the people that live here value the character of the place including our beautiful tree lined roads that deserve to be retained as 'scenic rural roads' not city streets. There are factors like pedestrian and vehicle safety issues for our roads but they shouldn't be used as an excuse for the destruction and inappropriate management of the natural character of our roadsides. With careful planning we can do it right. ♦

STEWART ISLAND PROMOTION ASSOCIATION

It will seem a long time since this Association has had anything in S.I.N. Unfortunately, our last two efforts either got lost in the air waves somewhere over Stewart Island or missed the deadline.

I am not going to attempt to recap on the past – who needs old news???

The Association has commissioned Dave Asher and his team to produce a generic video about the island. He is in the process of doing this – this will take place over a period of time. The video will be a great promotional tool and will also be available for purchase by the general public – it will make a great gift. We will let you know when this becomes available.

The Association has had more of the large Stewart Island maps laminated – yet another great tool to use when pointing out places of interest to visitors. These maps can be purchased from the Visitor Information Centre in the D.O.C. building. Contact Lesley Gray to ask about availability. We don't want you making a wasted trip.

A good group of people have been pulling together as a team – as in other years – to prepare some of the seafood products which the Association sold at the Bluff Oyster and Southland Seafood Festival on Saturday 26 April. In the words of the President – “It was awesome”. The food sold quickly and a reasonable profit was made for the Association. There is always great support from the community for this event, ranging from the preparation of the food, the running of the stall/cooking of the food and in the purchasing and eating of the product. The Association is very grateful to everyone concerned for their efforts.

No doubt you have all noticed the nice tidy community noticeboard. There is a place for all types of advertising and also for those folks who pay for an allotted space. Let's try to make this a tidy place for information to be imparted to those who are interested. We need to have pride in our noticeboard (and other promotional tools) therefore we have to make a concerted effort to this end. I know the community can be counted on to keep an eye on this.

We hope you find the street map, the brochure and the Stewart Island web site valuable tools for advertising and promotion of our lovely island. If you haven't taken a look at the website, please do. I am sure you will be impressed with it. Dedicated members of this Association have put in a lot of work, time and effort to produce these very useful tools. Once again, we are grateful for this, as it is their own time that is given up to keep these things informative and up-to-date. It's voluntary.

The Annual General meeting is to take place on Thursday 29 May 2003 at the D.O.C. Field Centre followed by a general meeting. This is a chance for all members to have their say, a chance to elect those you want to represent you into office-bearing positions and a chance to address the Annual Plan and Associated budget. The meeting will start at 7.30 pm. If you want to be informed, this is your chance to ask questions about matters taking place at the present time and for clarification of things you are unsure about.

There is plenty happening on this wonderful island. Let's make it all positive!.

Colleen Dawson
SECRETARY

A CAPITAL VENTURE

Gwen Neave

Toi Rakiura Arts Trust was invited last year to display the photographs exhibited last August on the island in the Beehive building, in Wellington. The invitation had been extended to the Trust by Hon Mark Burton, Minister of Tourism. His senior policy analyst, Jennie Darby, had been present when the Governor General, Dame Silvia Cartwright had originally opened the exhibition and her enthusiasm for the exhibition greatly influenced the Minister's decision. To fit into the busy schedules of the Speaker of the House of Parliament Right Hon Jonathon Hunt, the visit was postponed until late April of this year.

The exhibition 'Perceptions of an Island' shows twenty-six photographs taken by senior residents of the island on disposable cameras. As the News presenter on the TV 3 Nightline coverage of the Wellington opening commented, 'the result was anything but throwaway'.

The efforts to find sponsorship to assist Toi Rakiura to send trustees and a photographer to Wellington for the opening of the exhibition there were shared with Venture Southland Staff. CEO Jeff Troon and Marketing Manager John Grant of Venture were extremely supportive of the project and pledged financial and personal help. John was responsible for facilitating the Origin Pacific Airways involvement that resulted in us procuring three free return air fares. A grant from the Creative Communities Committee of the District Council helped to meet the freight costs for the crate that housed the photo's on their journey. The crate itself was lent to Toi Rakiura by Jim Geddes curator of the Eastern Southland Gallery and the Trust were very grateful to have its use and the ability to work with Jim's freight contacts.

Locals helped too in the form of Ian Munro guaranteeing free passage for the crate to and from Bluff, and Don Dickens and his team

(with a special permit from Phillip Smith) getting sufficient oysters for the opening supper. Nathan Pasco donated a salmon which Bruce Ford smoked and Ulva and Gwen provided paua and cod.

The opening was attended by several Ministers of the Crown, senior parliamentary staff and a mix of people with strong links to the island. It was particularly pleasing to see young adults who had grown up here - Rebecca Smith, Tamar Learmonth (and fiancé Lance Herring) and Brendan Ford. An extra special guest was Sheila Natusch who renewed contact with Hon Judith Tizard, who opened the exhibition, and was astonished and delighted to see the huge poster used as a background to the speakers' dais that featured her brother Alec with his boat on Lonnekers Beach. We were happy to welcome Margaret and Ted Rooney's daughters Sally and Jonet who were both delighted to see their Mother's work shown.

There were about 30 - 40 at the opening hosted by Hon Mark Burton. However senior staff told me as I took the exhibition down at the end of the week that the TV coverage by Nightline had prompted large numbers of the public to come to the Beehive especially to view the photo's. Special dispensation was granted to allow their entrance. A CD launch the following night in the adjacent Banquet Hall meant the 400 invited guests got to view and enjoy the photo's prior to that event. Two other official engagements in the foyer on the days following the opening also ensured more people got to see 'Perceptions of an Island'. Although the Governor General was in Turkey, members of her staff came to the opening and attended the 'after-match function' in Jonathon Hunt's rooms. Earlier in the day they had hosted the Trustees, Sue Ford and Lindsay Lord to a visit to Government House. It was extremely interesting to hear the history of the house and see the remarkable art collection and collection of state gifts.

The days in Wellington were hectic and packed with wonderful experiences for the trustees who attended the opening and for our guest photographer, Lindsay.

A Capital Venture (contd.)

We are indebted to so many people for helping make the trip possible. Toi Rakiura are proud of their achievements as a Trust and look forward to further promotion of the arts in our island community.

Timber Appeal

Toi Rakiura would like to build a packing crate to protect and to transport the 30 large picture frames used for exhibitions in Oban and Wellington. If anyone has some spare 100 x 50mm tanalised or PGBT radiata and/or some sheets (or part-sheets) of 12.5mm plywood that they are willing to donate, please contact our Secretary, Ulva Amos, (telephone 219-1216) who will arrange collection. Many thanks – Toi Rakiura Trustees.

How true.....

According to today's regulators and bureaucrats, those of us who were kids in the 50's, 60's, 70's and 80's probably shouldn't have survived. Our baby cots were covered with brightly coloured lead-based paint which was promptly chewed and licked. We had no childproof lids on medicine bottles, or latches on doors or cabinets and it was fine to play with pans. When we rode our bikes, we wore no helmets, just flip flops (jandels) and Fluorescent clackers on our wheels. As children, we would ride in cars with no seat belts or air bags. Riding in the passenger seat was a treat.

We drank water from the garden hose and not from a bottle - it tasted the same. We ate dripping sandwiches, bread and butter pudding and drank fizzy pop with sugar in it, but we were never overweight because we were always outside playing. We shared one drink with four friends from one bottle or can, and no-one actually died from this.

We would spend hours building go-carts out of scraps and then went top speed down the hill, only to find out we forgot the brakes. After running into stinging nettles a few times, we learned to solve the problem. We would leave home in the morning and play all day, as long as we were back before it got dark. No one was able to reach us all day and no one minded.

We did not have Playstations or X-Boxes, no video games at all. No 99 channels on TV, no

videotape movies, no surround sound, no mobile phones, no personal computers, no Internet chat rooms. We had friends - we went outside and found them. We played elastics and street rounders, and sometimes that ball really hurt. We fell out of trees, got cut and broke bones and teeth, and there were no lawsuits. They were accidents. We learnt not to do the same thing again. We had fights, punched each other hard and got black and blue - we learned to get over it.

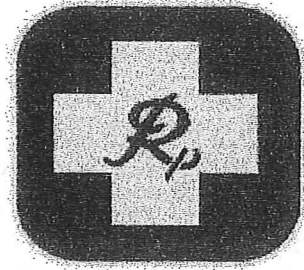
We walked to friend's homes. We made up games with sticks and tennis balls and ate live stuff, and although we were told it would happen, we did not have very many eyes out, nor did the live stuff live inside us forever. We rode bikes in packs of 7 and wore our coats by only the hood. Our actions were our own. Consequences were expected.

The idea of a parent bailing us out if we broke a law was unheard of. They actually sided with the law. Imagine that! This generation has produced some of the best risk-takers and problem solvers and inventors, ever. The past 50 years have been an explosion of innovation and new ideas. We had freedom, failure, success and responsibility, and we learned to deal with it all.

And you're one of them. Congratulations!

Please pass this on to others who have had the luck to grow up as real kids, before lawyers and government regulated our lives, "for our own good".

NEW PHARMACY SERVICE
Free Delivery



- Pharmacy Products
- Photo Developing
- Prescription Service
- Cosmetics - Elizabeth Arden
- Revlon
- Innoxa

La Hood's The Chemist Ltd, 43 Main Street, Gore

PHONE: 0800 4 LA HOODS

FAX: 03 208 1722 EMAIL: lahoods@xtra.co.nz

Your Health is Our Business

Stewart Island News – Celebrate Stewart Island is a (usually) monthly publication produced by Stewart Dovey, P O Box 87, Stewart Island

Email: sdovey@es.co.nz Telephone 219-1270

Please forward your contributions (preferably by email as an MSWord™ attachment)

Subscriptions are available at \$20 per ten issues to a Stewart Island P O Box or \$25 per ten issues posted to a New Zealand mainland address by surface post.

Deadline for June issue is Friday 20th June 2003

Subscription Request

Please return this form to: Stewart Dovey, P O Box 87, Stewart Island.

Subscription to Stewart Island News for.....
To be delivered to.....

Ten issues to: Oban P O Box (\$20)* or to NZ address (\$25)* *delete one*

Please enclose cheque made out to "Stewart Island News" with this form.