

# STEWART ISLAND NEWS

## CELEBRATING RAKIURA

MARCH-APRIL 2010

\$2.50

**Note: there was no February issue.**

Despite gloomy predictions, the summer has yielded a bunch of gorgeous sizzling hot days for us.

Our Olympian medallist Diddles is running the Community Centre now and has organized lots of activities, check the news on page 6 and cut out the new schedule (p14) and stick it on your fridge.

WELCOME to our new Rugrats teacher Rebecca and her partner Justin! (p2)

On the wild side: The Gells spotted Royal Spoonbills at Deep Bay (p7). We've been seeing dolphins in Halfmoon and



Morgan bikes into the Bay.  
Photo from L Cave

Horseshoe Bays. 28 pilot whales perished on West Ruggedy just after Valentine's Day.

Summer fun has included Murphy Day, Waitangi Day (pp 12-13), and a tunnel house tour (p11). Check out the latest issue of *NZ Gardener* — Fluff's tunnel house is featured in it.

Summer has included some extremely not-fun moments as well: a Waitangi Day punch-up left a visitor seriously hurt and locals shaking their heads over such mindless aggression (p14). The Pub



Rata Johnson and Barbara Wilson enjoy Mason Bay. See story below.

isn't an ideal place for those who can't handle their handles...

Thanks to Kari for editing *SIN* in my absence. Thanks to Liz for watching Moby so I could put this issue together. If there is anyone else out there who'd be interested in stepping in as editor every now and then, get in touch with me (Jess at 1367).

***The island community offers its condolences to the family of Ron Moyle. Ron will be dearly missed.***

Inside:	
DoC	10
Garden Circle	5
HMB Beat	14
Nurses News	6
Obituary	3
SIRCET	15
<i>And much more!!</i>	

### Rata's adventure

by Barbara Wilson

For many years our lovely Rata Johnson has expressed a desire to have a look at the island from the air. Last Tuesday her dream came true. Sandra Whipp rang me to generously invite myself and Peter to accompany both herself and Trevor Johnson on a flight with Rata. The day was picture perfect. Clear blue skies, golden sunshine and no wind.

Gerald the pilot flew us across the

inlet. It was so interesting to see Big Glory Bay and the salmon farm. We went on across Ocean Beach and Chew Tobacco Bay passed East Cape down to Port Adventure. Fabulous to see all the different bays, nooks and crannys. Places I have longed to see and check out often on a huge map of the island on our wall. Lords River, what can I say – awesome is that enough. How we gasped when Gerald swooped down through The Brothers. The look on Rata's face as we journeyed on was wonderful. Worth gold. When we got to Pegasus which has

been high on our list of places to see Gerald did not just fly past. He went in to the wee bays and around Pearl Island making sure we could see everything. Making sure we were able to make the most of every photo opportunity. The easy to recognize Gog and Magog were just stunning. On we went to South West Cape and turned up the other side of the island. The contrasts were amazing from the thick bush on our side of the island to the vegetation on the other. Seeing the Mutton-

*(Continued on page 2)*

Window Repairs  
Shelving & Mirrors  
New Glazing  
Double Glazing  
Glass Doors

*Don't be fooled by imitations*

We offer genuine double glazing  
Double glaze your existing aluminium windows  
and enjoy the benefits with retro-fit

**INVERCARGILL**

**GLASS & MIRROR**

**0800 862 414**

- Keeps warmth in and saves energy costs
- Cuts out noise
- Replaces glass in the existing frames
- Reduces condensation
- Adds value to your home
- 10 YEAR WARRANTY & FREE QUOTES

Ph: (03) 214 0918 Fax: 214 0938  
Toll Free 0800 862 414  
258 Mersey Street  
PO Box 7067, Invercargill



## We have a new teacher!!!!!!! Yay!

**RAKIURA RUGRATS!** Thanks to the whole community for your brilliant support and putting up with constantly hearing about Rugrats (again!). We are thrilled to let you know we have a new teacher starting the week of the 22<sup>nd</sup> February. Rebecca Norrish and her partner Justin will be calling Stewart Island home after moving down from the Canterbury region. I'll let Rebecca tell you all about herself in the next issue but as a wee snippet in the meantime, not only is Rebecca a trained ECE teacher who loves tramping and fishing but from accounts a good musician also so I'm sure our kids are going to have loads of fun!

A huge thanks to Steph Clarke who has been doing a wonderful job filling in for us at Rugrats. Steph, what would we do without you? Thanks so much!

## TE ARA REO

### MAORI LANGUAGE CLASSES WITH TUTORS FROM THE SOUTHERN INSTITUTE OF TECHNOLOGY.

Classes for 2010 are offered to Stewart Island residents and will begin 8<sup>th</sup> March if sufficient numbers register.

Watch the notice board for time and venue.

Registration forms may be obtained from The Ship to Shore or Gwen Neave.

### THE COURSE IS FREE!

This is a fun way to learn the Maori culture and language with lively and motivated tutors.

### REGISTER IMMEDIATELY.

Things are back in full swing with

### Stewart Island/Rakiura Search & Rescue.

A reasonably quiet Christmas has come & gone, and now our monthly training sessions (usually first Tuesday of each month) have kicked in again. By the time this has gone to print, a number of us will have mastered the skill of exiting a helicopter & being plucked from the sea in a scoopnet. Other hands-on training is also in the pipeline. If this sounds like your cup of tea, or if you'd prefer something a little more sedate but would still like to be involved, feel free to come along. If you wish to have an e-mail to remind you of the what, where & when of each training night, please contact Kirsten at [Kirsten@xnet.co.nz](mailto:Kirsten@xnet.co.nz) so I can advise you of up and coming events. All welcome!

*(Continued from page 1)*

bird islands and the wee houses was so interesting and surprised us to see so many houses and in such spectacular scenery. From South Red Point with its red rocks on up to Doughboy. Our intrepid pilot turned in and around again so we could have a good look at the beach.

Then the jewel in the crown – we landed on the sand at Mason's Bay. We all got out and had plenty of time to have a good look. The sky was so clear we could see the bare, sheer, steep rock of Solander Island pointing up to the sky like a big finger. Back in the plane we flew along the beach spotting the homestead and the huts in the trees. What a view. There was Codfish Island and Ruggedy Range – glorious! Looking down on the tarns right up the top of Anglem was fabulous. Then the homeward leg. Along Murray Beach to Port William, on to the beautiful, familiar Lee Bay, Horseshoe, Butterfields and Half Moon Bay.

So thankful to share with Rata, Sandra, Trevor and Peter the experience. I am still buzzing with the excitement of it all. To see the island in all its beauty I felt such appreciation to live here and be part of the community. Precious memories for sure.



**Graham Hamilton Gordon Paterson (Paddy)**

**3 11 1946 - 19 1 2010**



On the 26<sup>th</sup> of January Graham's ashes were interred with his infant daughter Amy.

Originally from the "other" Johnson family, Graham's grandfather Robert Johnson was born at Horseshoe Bay in 1880 to John and Jessie Johnson.

Robert later went on to live at Watercress besides Jamieson's.

Graham's parents, Gwen and George Paterson built a house in Rankin Street in the 1930's and this was above Jamiesons.

Graham and his father George built the Postmasters house (Beach House) and altered the Post Office and the Anglican Church.

Graham loved the Island and was farewelled by his Family with the help of John Leask and Brenda and Roger Hicks.

*Gently across the oceans swell  
To an Island he loved so well  
To the sound of the tui and the pounding sea surf  
Graham and Amy , at last a safe berth.*

*by Susan Tairi (Graham's sister)*

I wonder how many of you know the story to the recently re-erected Oban township sign? And have you noticed the number of tourists photographed besides it? I am not sure whether Doug Beck had that in mind, but it has certainly been lovingly restored from a badly rotting piece of wood barely recognizable, to what we see now.

There will be quite a few who will remember it standing nearly opposite the road leading to the wharf.

Rather than do the boring jobs of life, I decided to do a little re-

search. While there is some doubt as to who actually decided that sign was to be made, there is thought that the lettering can be attributed to a Roger Block/Bloch. In those days the Stewart Island Community Board were able to make their own decisions so the 'County Foreman'

Roger Brand positioned it where visitors arriving on the Island would view it. As the ferry only made the crossing three days a week, its arrival was of more interest than it is these days. The area around the shop was not the bottleneck it can be with visitors and cars

in far greater numbers. Any further information you may have please ring me or email the museum.

So thank you Doug. Once again I understand the expression *If a job is worth doing it is worth doing well.*

—by Lee Wadds





# ban **G**lobetrotter *off-Island Adventures.*

*Intrepid seaman Ben Hopkins shares his Panama Canal adventure...*

## Taking a shortcut.

After a year of being landlocked and studying at the New Zealand Maritime School in Auckland, the inevitable happened and I was required to get back to work! This time the company I work for flew me to the doom and gloom of the Northern Hemisphere winter to join a product tanker



The three-stage Gatun Locks lifting ships up to Lake Gatun.

loading in Amsterdam as Second Officer. Arriving on board (in a rather nippy -2°C) I discovered we were loading two grades of unleaded petrol for discharge in Chile, which required about 3 weeks steaming and the opportunity to experience the shortcut from the Atlantic to the Pacific Ocean. The Panama Canal.



Inside Gatun Locks behind a bulk carrier and container ship.

Prior to 1914 the only way from Europe to the Pacific Ocean was around the often-treacherous Cape Horn at the tip of South America, well into the "Furious Fifties" and not a place you want to linger if you can avoid it! Especially under sail! Today most ships that can fit through choose the shortcut through the narrow isthmus between the Americas, saving time due to the shorter distance and avoiding a high-latitude battering

in the process.

This was the first time through the Canal for most people on board the ship, so those who weren't on duty elsewhere lined the bridge front with

cameras, doing what those on the cruise ship behind us in the convoy were paying thousands to do!

The entire transit from Cristobál on the Atlantic side to Balboa on the Pacific side covers a distance of

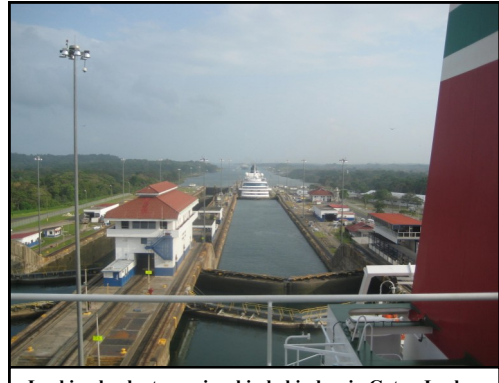
44 nautical miles (81km) and takes about 10 hours, all going well. This may seem like a long time (averaging 4 knots!) but we had to get our ship of 50,000t displacement into a set of locks, lift it up, steam it across a lake, along a narrow winding canal and then drop it down via two more sets of locks into the Pacific Ocean! Sound simple? Not when you consider that we had less than 1m clearance on each side when squeezing into the locks and she's not the most manoeuvrable ship! There is a bit of touching-up of the paintwork to be done when we get to Quintero!

The operation of the locks is a bit like a giant elevator for ships, which requires 20 "lift attendants" (a Panama Canal Pi-



Inside Gatun Locks.

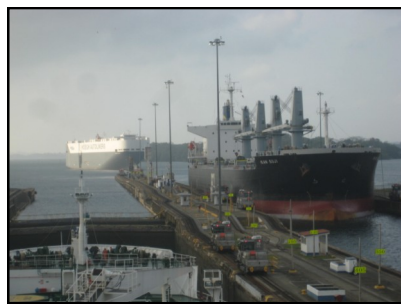
lot, who stays on board for the entire transit and 19 canal crew who clamber on board just before the locks and do all the mooring handling on board



Looking back at a cruise ship behind us in Gatun Locks..

To begin with a large tug is made fast at each end of the ship and

they help to position us alongside the approaches to the lock entrance while the canal crew make the ship fast to the "mules" on both sides. Rather than the furry variety most commonly seen carrying oversized loads, these mules were locomotive engines with large winches, each with two wires leading to the bits on board the ship. They then travel along tracks providing tension when required, in order to keep the ship roughly in the centre of the lock as we move forward. The ship's own engine is used to move us forward into position before the lock gates are closed behind us and the operator pushes the "up button" for the lift!



Passing the northbound convoy in Gatun Locks..

As can be seen in the accompanying photos, it's a fairly large-scale operation with 2 adjacent locks and three stages in each. Once the gates are closed behind us, approximately 101,000

tonnes of water is released from the lock above us, passing through huge railway-tunnel sized culverts into our section in around 8 minutes! This brings the two locks to the same



Crossing Lake Gatun.

level and once the gates in front of us are open, we move forward until they can be closed behind us again and the process repeated until we are at the level of Lake Gatun. In total the 3 locks raise the ship up by 25.84m and the whole process takes 1 to 2 hours.



Meeting a bulk carrier coming the other way.

Once clear of the locks it's a quiet cruise across Lake

Gatun and along the winding canal, which is currently lined with large dredgers and earthwork machinery working on the massive



The Panama Canal.

canal-widening operation, which will eventually allow even larger ships to



Looking back at a cruise ship and car carrier behind us in Miraflores Lock.

pass through. At present the 94 year old canal restricts ships to "Panamax" size or less, which is up to 289.6m in length and 32.3m in width. Our ship is a mere 183.9m long, but at 32.26m wide is still considered Panamax size and is right on the limit! As a comparison she is roughly the same size as the tanker "Kakariki" which is sometimes berthed opposite the ferry terminal in Bluff.

Before we can enter the Pacific Ocean we have to be lowered back down again and this is done by two more sets of locks. The Miraflores Locks take us down 16.61m to Lake Miraflores and the Pedro Miguel Locks take us down a further 9.45m to the sea near the city of Balboa, where the pilot disembarks and lets us continue on our way.



Alongside a large cruise ship in Miraflores

The Pacific Ocean is actu-

ally about 20cm higher than the Atlantic Ocean, apparently due to the Pacific sea-

water being slightly less dense than the Atlantic. If the canal were simply an unobstructed channel through, there would be a large current and massive tidal flow through it, due to the three-hour lag in tidal phase from one side to the other. However, the reason for the locks is that Lake Gatun is nearly 26m above sea level. At the time it was built, it was also the largest artificial lake in the world. Last year 14,342 ships passed through the canal, taking the total

number since it opened in 1914 to 922,000!

It was good to finally experience first-hand

this marvel of engineering and to be able to tick it off my list of must-see shipping experiences! I've got a few more to work on yet, but it's just a matter of being on the right ship when the right voyage orders come through!

The Bluff book *Hey-day to May-day* is being re-printed and should be available by the end of February. To order a copy phone Jan Mitchell 212 7330 or leave your name at the Rakiura Museum.



**STEWART ISLAND GARDEN CIRCLE**

The next Meeting of the Garden Circle will be held at the home of Lee Wadds at 2.00pm on Thursday 11<sup>th</sup> March.

Competition:  
3 small cuttings or  
3 small rooted plants



**Congratulations**

*Newlyweds*  
Paul and Keri-Lee

*New parents*  
Letitia and Andrew  
Welcome Ryan

Community Centre News

**New Hours** 2-3pm Wednesday, and Sat 10.30-11.30am, but I am available most mornings, just ring or text me.

There is a lot happening at the community centre

Music & movement for under 5's

Swiss Ball

Tae Bo

Walking and light exercise group

Squash

Volleyball

And check out our great gym and all the equipment. I will endeavor to learn more about the equipment.

I am also going to do some Tai Chi training so will be able to incorporate this into our walking group sessions.

If anyone is interested in being on a phone list for squash, there is a list to add your name to on the notice board, or text me your number and I will add you to the list then send a copy of the list to everyone on it - lets get into it, it is a great work out

and lots of fun.

Also please feel free to ask me about any other sports you are interested in having a go at. Come on it's all good fun.

Check out the timetable of what is on and when at the community centre or the notice board.

Cheers, Diddle

Community Centre 2191477 or a/hr 2191166 or text 0272316305

**Stewart Island Visitor Strategy -2010**

Back in 1997 a strategy for sustainable growth and development was planned and name Stewart Island Tourism Strategy. A review of this 1997 Strategy is set to take place and a project working group is to be established to help undertake the work.

Tourism Resource Consultants (a company that have wide experience in such work) will be co-ordinating the project. It includes a Stewart Island Visitor Survey which is already underway, a review of the previous 1997 document and identification of new issues and opportunities for the tourism industry and the Stewart Island community.

Public and stakeholder consultation will be undertaken in April, but Stewart Island Promotions Association is interested to hear from anyone who has an interest in being a part of the Stewart Island Visitor Strategy Steering Group that is to be established.

If you do have an interest, please contact Jon Spraggon at 2190034

**Nurses News.**

Hot weather at last!!

Hot weather can bring "tummy bugs". Please read the mail out about food and water borne bacteria that can make you sick, and also the information about keeping your water supply safe for drinking. Lower tank levels can compound possible problems with water quality.

Remember sunburn is not "cool" and enjoy the beaches and the swimming while summer is here!

The Health Committee AGM was well attended, and thank you all for your support.

**Services**

**In EMERGENCY dial 111**

**Contact Nurse outside clinic hours; Ph 0800 426 285 (Nurses Bleeper) or Ph 03 2191098 (Nurses Cell Phone).**

**General Primary Health Care Clinic; Daily 10am-12.30pm. (No appointment necessary).**

**Clinic Number- Phone; 03 2191098 Fax; 03 2191072.**

**Women Health Clinic; Thursday's 9am-3pm. Please phone clinic to arrange an appointment.**

**Well Child/ Family Clinic; Wednesday's; 9am-3pm. Please phone clinic to arrange an appointment.**



PHOTO: DENISE HAYES

**Trae and Winiata, Waitangi Day**

*Now here's a funny thought ...*

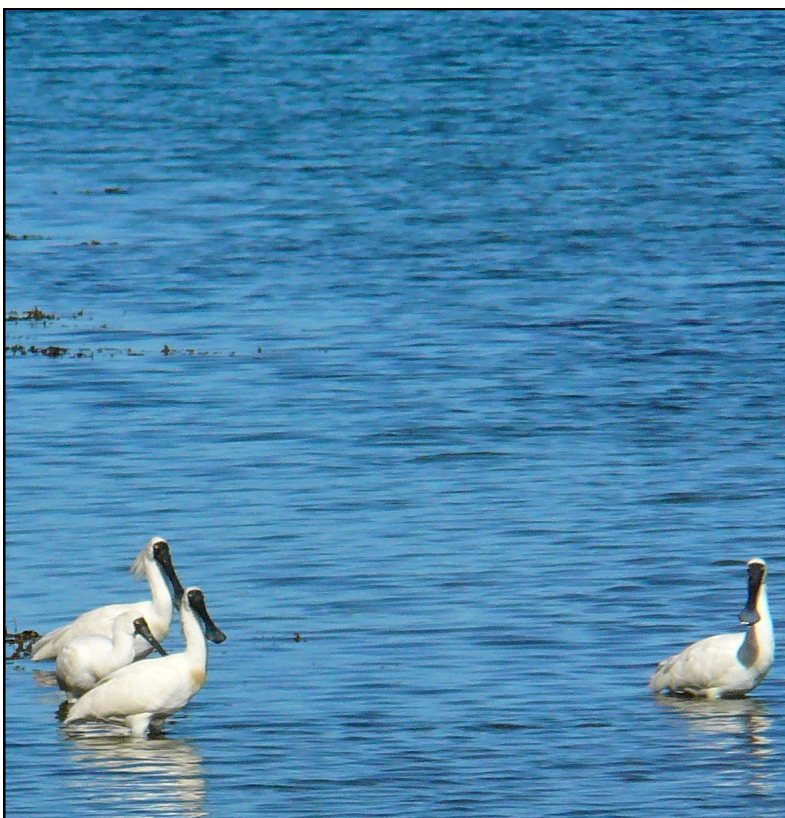
We average 80-100 spam emails a day, straight into our Junk Mail. It takes me about 20 seconds a day to run down the list and make sure that nothing has hit the Junk Mail by mistake. That's what happened right up till Christmas Eve. Suddenly, the Junk Mail contained only eight or nine emails a day. Then on 6 January, we suddenly received 84, and ever since then, we have been back to 80-100 per day. So do Spammers have Christmas Holidays then? —Sue Ford



We've had some very big and very fancy boats visit our harbours this summer. The cruise ship that generated a media fuss with its arrival did not actually produce the anticipated hoards of tourists in Halfmoon Bay. Many of the passengers were warned about our steep hills and shortage of shops and ultimately were talked out of coming ashore!  
*PHOTOS from Jules Retburg*



**Stewart Island Summertime: Paradise!**  
 The weeks of dazzling weather seems to make us forget the months of gray.  
*PHOTOS from Liz Cave*



Ewan Gell sent us this rare sight: royal spoonbills in Deep Bay.



**Congratulations to Claire Prior on her graduation!**  
*Photo from Noel Bulman.*

**NATIVE PLANT NURSERY**



**Help is needed collecting native seeds.**

Do you have native plants in your garden? Or like going on walks where you could collect some seeds on the way?

Many native plant species are flowering and seeding now until March and the nursery needs some seeds to source the new generation of plants.

For a list of the seeds we want to grow, or any suggestions of native plants you would like grown for your garden, **contact Jessi on 291**

**Help needed** to propagate and care for native plants. Grow native plants for your own gar-



dens or for projects like replanting Lon-nekers Bay.



**Thursday Mornings**

– Will leave from outside Glowing Sky/Environment Centre at **9 am** for anyone that would like a lift out to the Horseshoe Bay nursery.

If you would like to help but Thursdays do not suit you, let me know and we can work something out.

Contact Jessi on 291 1291 or [jessi@sircet.org.nz](mailto:jessi@sircet.org.nz) or PO Box 124

**An Island to Island Affair**

There was a certain amount of buzzing in the air as Tam and James Ware flitted about making preparations for their wedding on New Years Eve. Much organization was required to ensure that people from "overseas" in Tasmania and on the mainland of Aus would be able to find their way down to 47o South and have a bed for a few nights. Provedoring for a feast of island fare with a slight hint of Tasmaniana was on the agenda, and of course the venue always subject to the well known Stewart Island weather patterns, to be considered...

This wedding provided a wonderful opportunity for our close family friends to get a taste of the Island we have become so attached to over the last 5 years, as well as their being included in our very special event. The moment we stepped on to the wharf (after what for most of us proved a very interesting Foveaux Strait

experience) we were immersed in true island hospitality. From the Hens Night through to the "clean up" day after the wedding we all appreciated the generosity, the way everyone pulled together, even a sign outside the shop to tell people the venue was changed! which ensured that the wedding celebration was such a memorable and happy occasion.

We all had such fun!! And the piece de resistance (apart from the beautiful bride and her party) in the form of a cake as a very life like Tasmanian Devil provided a great talking point for everyone on both sides of the ditch.

We have returned home with such a wonderful warm feeling and memories of the generosity of time and assistance given to Tam and James by their many friends on the island.

Thanks Tam and James for choosing such another special island to live on..

*Sam and Richard Ware*







## Learning through Movement



to bring these courses to Stewart Island in March this year!

### Wednesday 3<sup>rd</sup> March

and

### Thursday 4<sup>th</sup> March

Nicola and Chris aim to leave us with a repertoire of new skills and the tools to keep developing these with our kids.

Do you only have 10 minutes before the water is too cold to continue?

Chris will show us how to maximise that time to make it worth going in.

Nicola will demonstrate how a child's experiences can help them to fulfil their potential.

"Active Movement is just as important for newborns as it is for older children. By helping your child to get active, you help their body to develop, you help them to learn and to feel safe, and you show them they are loved." *Sports and Recreation New Zealand.*

*Thinking of becoming a parent or offering child mind-ing services? You are welcome too.*

Several sessions are spread over two days, aimed at different age groups (but all parents and parents-to-be

are welcome, regardless of your ages).

0 – 3 yrs Active Movement in Water

3 – 5 yrs Active Movement in Water

*(These two are mostly classroom based, with an optional 20 – 30mins in the pool at the end)*

School ages swimming development (parents of all ages encouraged to attend)

0 – 3 yrs Active Movement

3 – 5 yrs Active Movement

School age children Active Movement

As parents, you are welcome to attend any of the classes. You might like to build ideas for when your child is entering the next stage.

A full timetable will be put up on the notice board and where possible, sent out to parents.

***Funds have been raised so that these courses are free of charge to you.***

*There are optional materials (DVD and waterproof activity cards) available at \$10.00 per family.*

If anyone can offer accommodation for either Chris or Nicola on Wednesday 3<sup>rd</sup> this would be gratefully appreciated.

Please phone Kari on 03 2191 533



Elaine Bailey was recently awakened by a noise on her deck and thought it was a "pesky possum" attacking her strawberries. She was surprised and delighted to see it was actually a young female kiwi

Elaine rushed inside for her camera. Now, this could have been a sweet photo with a charming caption like "Kiwis on our doorstep"

...BUT

there's a sad postscript: Reviewing the photos the next day, Elaine was disturbed to see in the background two large staring eyes and the outline of a cat. It could have been a feral animal or someone's "self-feeding" pet.

PLEASE practice responsible pet ownership so photos like this can make us smile.

## DOC Spot

by Sharon Pasco

### Island based Area Manager

Acting Area Manager for Southern Islands, Mark Townsend, will be based on Stewart Island until the end of March. Andy Roberts, the current manager, will be acting Conservator in Invercargill. Mark took on this secondment to further develop his career in Conservation Management. He is normally in Motueka, where he manages visitor facilities for DOC in the Abel Tasman and Kahurangi National Parks, as well as in Mt Richmond Forest Park and associated reserves. Mark was raised in Otago, the son of a stockagent. He was born in Balclutha and later lived in Clinton, Ranfurly and Dunedin. After two years travelling in Australia and Asia, Mark attended Lincoln University where he studied Parks and Recreation. Since graduating, and a further three years in South America and Europe, Mark, his partner Sarah and three children travelled around New Zealand working for DOC in locations such as Nelson Lakes, Whanganui, Wairarapa (including the Tararua's), Catlins and most recently the "top



of the south" - Motueka. Mark is keen to take full advantage of this opportunity by working alongside the Southern islands staff and becoming part of the local Stewart Island community for a couple of months.

### Update from the Kakapo Team

This summer has seen a bit of a change in the trend on Codfish Island / Whenua Hou: the number of kakapo is falling. No cause for alarm though, as this is the result of five birds being transferred to Anchor Island in Dusky Sound. All females a few years old, it is expected that they will help establish a breeding population on Anchor, which is slightly larger than Codfish and has a greater diversity of masting tree species to potentially trigger breeding. The first to go were Marama, Yasmine and Toitiiti in November. They settled into their new home well.

On Christmas Eve, Anchor got a present in the form of JEM, who is doing fine but still receiving supplementary food to get her weight up after the transfer. At the same time Pounamu, who was due for transfer, was found to have a cloacal infection and was in poor condition. She was promptly shipped off to Auckland Zoo for treatment, and this week she was released on Anchor. Clearly a bit restless in her new surroundings, she has been keeping the rangers there busy with her wanderings.

\*\*\*

Christmas on the kakapo islands is a great experience. Different in that you're on an island with just one or two other people and a bunch of rare parrots, nevertheless Christmas traditions are observed - the hut gets decorated with tinsel and there is of course a big roast dinner. Not one to miss out on a celebration, Sirocco, the newly appointed Spokesbird for Conservation, joined the festivities at Codfish hut on Christmas Day.

\*\*\*

No breeding this year: the males have been maintaining their track and bowl systems, but our night listens haven't brought any booming. Early indications are that the rimu may mast again next year, and our scientist Ron will be down to Codfish in the coming weeks to confirm this, so watch this space!



Some of the "locals" James met while on Enderby Island.

### Variety of work for VA team

The visitor assets team has been working on projects far and wide this summer. James Ware spent several weeks in the Sub Antarctic islands putting in new boardwalk and maintaining the structures down there, while Dale Chittenden made a quick trip to the Antipodes to inspect historic assets and reroof a hut.

\*\*\*

An upgrade of the middle section of the Rakiura Track is currently underway. The track between Port William and North Arm Huts is undergoing a substantial reroute (past areas of historic note), with the boardwalk being replaced with gravel and box steps. The track is to remain open while the upgrade is taking place. Ryans Creek track is also scheduled for an upgrade over the next few months. Unfortunately this track will need to be closed during the boardwalk removal and graveling, but we hope to keep this closure as short as possible and are sure that the results will outweigh any inconvenience to the public. Be sure to check both tracks out once they're finished!

\*\*\*

The team has been catching up on track clearing and the NW and Southern Circuits are looking spiffy. In particular, the dubious track up Mt Anglem / Hananui is looking extra smart thanks to some hardcore days of muscle and machinery.

### The weather for weeds

The warm weather has seen the weeds around the community area growing with their usual vigour at this time of year. So the weeds team has been busy dealing with Selaginella, Chilean Flame Creeper (CFC), and German Ivy.

\*\*\*

### Selaginella *Seleaginella kraussiana*

- Many of you would have received a letter regarding the Selaginella survey being undertaken in the residential area starting on February 8th. Over the next two weeks John Whitehead, a respected botanist and crib owner himself, will be visiting properties in search of Selaginella. The aim of this survey is to get a better idea of how wide spread this weed species has become. It is really

(Continued on page 15)



### Another tunnel house tour?

asked Shorty, and so we did,  
 First stop in the bay, off to Ernie and Bid's,  
 Not all of us were game to go in,  
 I think there was the worry of Ernie's gin,  
 Here was the one place I didn't stop,  
 But I believe his tomatoes were a  
 bloody good crop,  
 First stop for most, outside the pub,  
 Most girls grabbed a pie, well, we need some grub,  
 Finally we all rolled up, ready to play,  
 First stop really had to be Leask Bay ,  
 Karen and Percy had a fierce guard dog,  
 But sorry Xena, you weren't all that good!  
 Traipsed down the road, off to see Fluff's,  
 Jack's driveway we all made it up (just),  
 Over the hedge to see Trevor and Dawn,  
 Still no-one home as we sped back down the lawn,  
 Back on the bus, Barry took us around,  
 To Ringa Ringa, but the boys were in town,  
 Gary and Bevan have a really big tunnelhouse,  
 I think we scared Mum, she was quiet as a mouse,  
 Off to Horseshoe to visit Helen's chooks,  
 More beer in the hen-house, what a bit of luck!  
 Hippy's elephant garlic looked like very small trees,  
 Anna was happy cos she ate some more peas,  
 Bill and Elaine's is a work in progress,  
 Bruce seemed more interested in the new cladding I must confess,  
 Off up the hill along to Margaret's patch,  
 How is it Jack knows the back ways  
 to all of those bachs? (coal deliveries!...)  
 A quick peek at Alan and Elaine's,  
 We think they were hiding too, are we really such pains?  
 A voice from the fence brought us to a quick stop,

Aunty Shirley was there, pickling Deb's cauli-  
 flower crop,

A quick whiskey was shared by all,  
 Don't forget to return the glass Barry,  
 or you'll be for a fall,  
 Next off to the man with the world's tidiest shed,  
 I think our praise was making Shorty red,  
 And just because we were told we should not,  
 We were off to Garry and Gwen's like a shot,  
 Nice grapes in there, we'll be back for the wine,  
 Off to the Dillons next, and it's about time!  
 Someone who was expecting us and brought out the rum,  
 AND some very nice bread, thanks Debs, it was yum,  
 We're on the home straight now, round to Peter and Bab's,  
 His triffid like structures were really quite fab,  
 Through the hedge to peek at Marty's,  
 Bet you didn't know while you were away, you'd hosted a party,  
 Along now to park next to Kirsten's car,  
 And have a quick snigger at Quinn's pink bull bars,  
 Sneakily up into Karen and Percy's section,  
 Perhaps you should have come with us on reflection,  
 Molly was all excited in her birthday rush,  
 Just what you always wanted, 20 drunks on a bus,  
 Squirt brought out some great homebrew,  
 Much to the delight of our fearless leader Frew,  
 Judy and Bryans was our penultimate stop,  
 If it's cabbages you're after, they've got a bumper crop,  
 The plan was to go round to the pavilion,  
 But Cronin's 40yr old sake changed our mind,  
 you're one in a million,  
 A quick trip to the bay, as a lettuce we did need,  
 Unfortunately Fordly's had mostly gone to seed,  
 The BBQ was on and Busgy away,  
 Cooking up a storm to end a perfect day, —Vicki Coats



*Summertime means more visitors, and more visitors means more people walking down the middle of the road! A frustrated and concerned resident recently sent the following item hoping to generate comments, suggestions, or any other observations. We'll print the feedback from you all next month.*

Hi Jess, talking to a few people over the past weeks there seems to be a common grumble.... We all know that when our lovely tourists come here they have a bit of amnesia and forget how to use footpaths etc but what about that other group of

visitors; the cribbies? While I'm sure you'll agree the majority of them are lovely people, there is the occasional one or two who just can't seem to see the big picture.

If you're riding a bike, put a helmet on. It's the law!

If you're driving around on the roads, sit on the back of your ute. The classic one the other day was someone hanging onto the back of the vehicle holding onto the spare tire!

Park where you are allowed to. Just because you pay rates,

doesn't give you free for all access.

Don't send your kids/yourself out to busk/sell stuff. A. You haven't got a hawkers license. B. It's illegal to sell paua shells without them coming through the quota system. All the Island operators have to work to the rules and regulations of the council, so do you.

*Send your thoughts to  
 Editor, Stewart Island News,  
 PO Box 156  
 or email to  
 editor@stewart-island-news.com*



# WAITANGI DAY 2010

If you missed the TV One *Closeup* bit about the Maori v. Pakeha game you can watch it on-line at

<http://tvnz.co.nz/close-up/black-vs-white-waitangi-day-3352619/video>

*The Press* also created a great slideshow colourfully narrated by various locals. You can find this by going to [www.stuff.co.nz](http://www.stuff.co.nz) and search key words "Stewart Island Waitangi 2010"

*Photos by E Ganley and J Kany*







**The Island Beat**

**Reported Crime in the last month:**

- Assault Elgin Terrace 05/02/10 19 yr old Christchurch male assaulted at about 2 a.m. by two Invercargill males aged 23 and 20. The offenders will be appearing in the Invercargill district Court in March.
- Theft of alcohol. A 19 year old male will be appearing in the Invercargill District Court in March for the theft of a \$10 bottle of Steinlager on the 06/02/10
- Trespass. A 18 year old male will be appearing in the Invercargill District Court after trespassing at the South Sea Hotel on the 05/02/10

**Traffic:**

Some Local residents have taken to parking vehicles for extended periods of time, in the 30 minute limited parking area outside the Shops on the corner of Elgin Terrace and Main Road. I have received complaints about the vehicles being parked in excess of the 30

minute time limit between the hours of 0700 a.m. and 7 p.m. The lack of parking outside the shops at busy times of the day is now a problem. I will be enforcing the 30 minute parking time limit from March 2010 to make it easier for shoppers to park.

Note there is plenty of anytime parking on Elgin Terrace (in front of the school) Main road and Eyr streets.

**Found Property:**

The following found property is being held by police:

- 1 x pair sun glasses in case (left at Anglican Church)
- 1 x Crag hopper vest style jacket with tobacco, money and a charger in pockets. (found at Lee Bay) 22/12/2009
- 1 x black Superpro back pack containing jeans and other clothing found Elgin Terrace 22/2/10

*Dale JENKINS*



**COMMUNITY CENTRE SCHEDULE**

Day	Time	What's On	Cost
Monday	9.30am	Music & movement for under 5s	
	5.30pm	Tae Bo	\$2
Tuesday	4pm	Swiss Ball	
Wednesday	9.30am	Walk & exercise	\$1
Thursday	9.30am	Walk grp	\$1
	4pm	Swiss Ball	
	7.30pm	Volleyball	\$2
Friday			
Saturday	9.30am	Walk & exercise	\$2
	4pm	Swiss Ball	
Sunday	9.30am	Tae Bo	\$2

(Continued from page 10)

important that we can identify and treat *Selaginella* early because it is so invasive in lawns and gardens, and as seen in other parts of New Zealand, it can quickly smother the forest floor by out competing native seedlings.

\*\*\*

**Chilean Rhubarb** *Gunnera tinctoria* - Another weed that many of you have identified as being on the increase is *Gunnera*. There is no question this South



American plant, with leaves reaching 2.5m, is spectacular in appearance. However it is also a Regional Pest Management Strategy (RPMS)

weed species that Environment Southland and the Department of Conservation want eradicated. *Gunnera* is highly invasive. It produces

hundreds of seeds which are easily dispersed by birds, and with a near 100% germination rate it is not surprising to see the numbers increasing on Stewart Island. This plant is a huge problem in many areas of the North Island. So if you have this in your garden, please contact us here at DOC so we can discuss with you ways to remove it. We will even replace it with some native plants.

Watch this space for more wandering weeds....

**Brent's return to uniform**

Brent Beaven returned to the field centre at the start of February to cover the Biodiversity Programme Managers role. Letitia McRitchie, who was covering Brent while he was on secondment to a national hunting job, has taken a break for maternity leave. She and partner Andrew King became the proud parents of Ryan Lewis McRitchie-King, born on February 9, in Inver-

cargill. Letitia plans to take the next couple of months off, before returning to work, allowing Brent to return to his secondment.

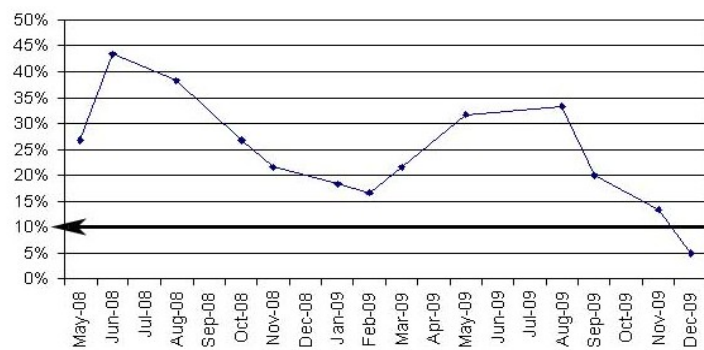
**Photo competition reminder**

Finally, a reminder to get snapping to win great prizes. It's almost time for SeaWeek 2010, and to celebrate DOC Te Anau, Invercargill and Stewart Island are running a Southland-wide photo competition, giving you the chance to win one of several great prizes! With three categories; marine life, coastlines, fishing and people, and prizes for both juniors and adults, everyone's in with a chance to win, just remember that photos must have been taken in Southland. Entry forms are available from the Rakiura National Park Visitor or can be downloaded at [www.doc.govt.nz/southlandphotocompetition](http://www.doc.govt.nz/southlandphotocompetition) Don't leave it too late – the competition closes on March 1 2010.

**A Milestone for Rat Control Reached!**

Thanks to all those people who have helped out with trapping over the last big rat year! The latest monitoring results show a big drop in the number of rats. This was achieved through your trapping efforts and with the Vitamin-D/Cholecalciferol toxin operation.

Monitoring is done by luring rats through tunnels that have inked cards in them. The number of tunnels that have rat footprints scurrying through the ink is calculated as a percentage. It gives an idea of rat numbers in the Habitat Restoration Project area.



The aim is to control rats below 10% all year round. This target is considered safer for most bird species to breed. For the first time monitoring

results show we have achieved this aim!!! This is fantastic. If we can keep rats controlled at this level, you may start seeing trans-located riflemen flitting around!

**Anyone interested in helping keep rats controlled, please contact Jessi Nichols: ph 219 1291 or [jessi@sircet.org.nz](mailto:jessi@sircet.org.nz)**

*Little Blue Penguin Monitoring*

Our annual little blue penguin slow walk counts started off with a bang, we saw 16 penguins one night! However the end of the season quietened down, and in the end we saw the same number of penguins as last year. During December we do 10 walks counting the number of penguins seen on the Ackers walking

track. The average number of penguins seen is compared with past years' results, and over time this will give us an indication of what is happening with the penguin population. Thanks to Cath Jenkins and everyone else who helped out with this monitoring.

**Notes from the Museum.**

If you haven't already got your copy of the popular **Stewart Island Boat Book** it would pay to get one very soon. We are down to under 200 remaining and 'there will not be a reprint'. Call into the museum and order your copy/ies now.

We are also looking for a **capable and honest person to clean the museum.** Top wages will be paid to a suitable applicant. Call at the museum and leave your details as soon as possible.



**Stork atop Ryan Lewis McRitchie-King's house.**

Looks like the island has a new tradition: a wooden stork on a newborn's rooftop (Shorty built the stork). This bird will have a busy year! Next stop: just next door...

**Earwig Corner**

A friend recently went by the Gells last month to drop off a crayfish. Finding no one home, the friend left it by the front door. Jenny soon returned home with her British visitor who exclaimed excitedly about "the crayfish who walked out of the bush."

**ARE YOU –**  
**Interested in creating a safer community?**

**Interested in providing support and justice for victims of crime?**

**Interested in realistic sentencing of criminals?**

**Garth McVicar**, founder of the Sensible Sentencing Trust, will share his vision of creating a safer New Zealand with the Stewart Island community

**on Thursday, March 4, 7:30 p.m.**  
**at the S.I.Pavilion.**

Mr McVicar set up the Sensible Sentencing Trust eight years ago in response to soaring violent crime and a justice system that was failing victims and letting criminals off lightly. Since then thousands of New Zealanders have joined him and the Trust has become a major voice in the debate on crime and justice.

Recently nominated for the New Zealander of the Year award Mr McVicar is a popular and sought after public speaker.

**Proudly sponsored by the S.I.LIONS CLUB.**  
**ALL VERY WELCOME.**

Dear Islanders,

Please note that our new landline phone # is

**1 487**

for both the Atkins residence and our businesses. This will be added to the Stewart Island phone list in the next updated version.

Please do not use our 0800 number; this is reserved for clients calling us direct only.

We are also contactable on the mobile anytime: 027 354 9991.

Many thanks to all for the phenomenal support!

Alina & Matt  
**Rakiura Charters Ltd** and **Te Tahi Bed & Breakfast**

**HOME WITH INCOME**  
**(Trademe ID# AYR820)**

50 Hicks Rd. Stewart Island By Owner

2 buildings 8 rooms + rumpus, garage

20 Acres/Paddock, rainforest, B&B,

Backpackers accommodation

CV \$390,000 All Offers Considered

**Call 07-868-2522 / 03-219-1041**



**CHOCOLATE AWARD**

Could you please give a chocolate fish to **Terri and the TukTuk.**

This is just sunshine on wheels! It brings smiles and cheerfulness to the place.

—from *Debs Dillon*

**Weed Control Morning**

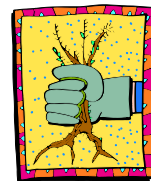
Come and help control the spread of suffocating noxious weeds.

**Wednesday 3<sup>rd</sup> March**

Harold's Bay at 9:30

Bring yourself and your "fighting spirit."

**Any enquiries please contact Jessi Nichols on 219 1291 or [jessi@sircet.org.nz](mailto:jessi@sircet.org.nz)**



*Stewart Island News* is published on a monthly basis as material permits.  
**Please send articles and enquiries to Jess Kany at Box 156**  
**or to [editor@stewart-island-news.com](mailto:editor@stewart-island-news.com)**  
**The next deadline will be 5th April**

If you wish to have Stewart Island News posted to you or a friend, please fill out this form and forward it with a cheque made payable to "Stewart Island News" to P.O. Box 156, Stewart Island. The cost is as follows:

12 issues to an Oban address or Internet address \$24  
 12 issues to other New Zealand address \$30  
 12 issues to international address \$54

Name of Recipient: \_\_\_\_\_  
 Address \_\_\_\_\_  
 \_\_\_\_\_  
 \_\_\_\_\_

